

**We All Live in a Watershed, so
What Exactly *is* a Watershed?**

Entering Stockport Creek Watershed

Hudson River Estuary



A Watershed is an area of land that drains water to a defined point. It is where all of the water (rain, snow, sleet, etc..) that falls onto that land drains into a single water body.

The Greater Stockport Creek Watershed Alliance defines this point where Stockport Creek joins the Hudson River.

The New York State Department of Environmental Conservation (NYS DEC) provided funding for this project from the state's Environmental Protection Fund through the Hudson River Estuary Program. Additional funding has been provided by New England Interstate Water Pollution Control Commission (NEIWPCC). Information gathered is intended to increase public awareness of water quality conditions in Hudson River tributaries and to support community-based watershed protection and restoration projects .

Greater Stockport Creek
Watershed Alliance
P. O. Box 422
Ghent, NY 12075

**Encompassing the watersheds of the
Kinderhook and Claverack Creeks in
the Lower Hudson Valley, New York**



**STOCKPORT
WATERSHED**

www.stockportwatershed.org

What's your Watershed Address?

**Find your place in the Greater
Stockport Creek Watershed**

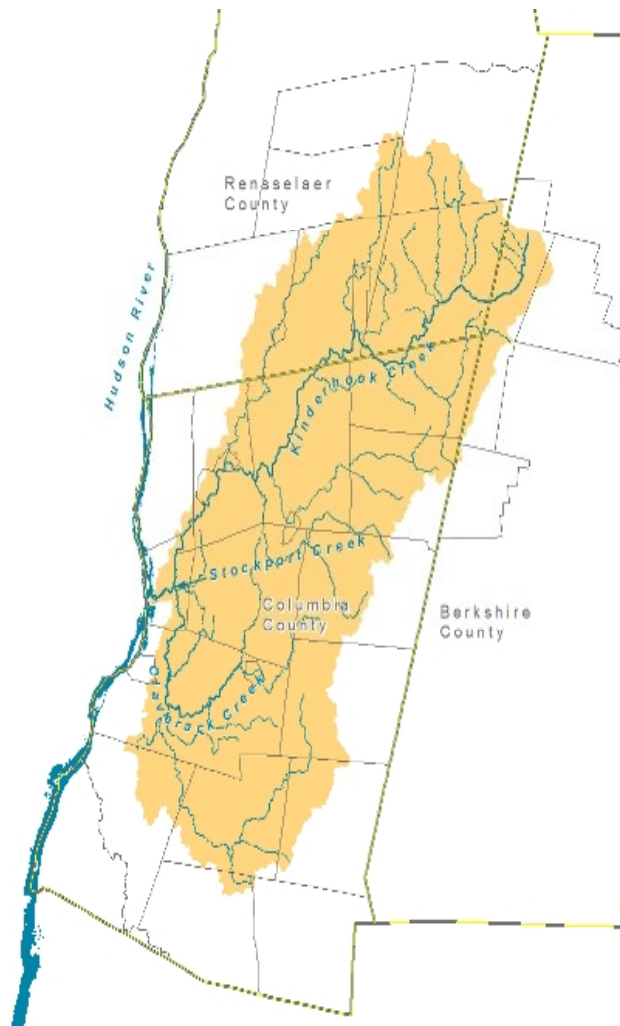
The Greater Stockport Creek Watershed drains 517 square miles of the Mid-Hudson Valley in parts of Columbia and Rensselaer Counties in Eastern New York, and Berkshire County in Western Massachusetts.

The goal of the Greater Stockport Creek Watershed Alliance is to explore, understand and protect our watershed ecosystem through community involvement and stewardship. Individuals, community interest groups, local government agencies, federal and state agencies, conservation and environmental groups, sportsmen and women, business and commercial organizations are invited to participate in our efforts to raise awareness about water resources. Our outreach efforts include stream monitoring workshops, stream walks, kayak and canoe trips, school programs, tree-plantings, and stream clean-ups to communicate to the public on issues in the area of water quality and stream protection.



Our Mission: To explore, understand, and protect our watershed ecosystem through community involvement and stewardship.

*Photo taken on Kinderhook Creek,
at Stuyvesant Falls near
The Upper Falls
Photo Credit: Gary Wall*



The Greater Stockport Creek Watershed is the second largest tributary watershed to the tidal Hudson River. Water in all or part of 26 municipalities are captured by the Stockport Creek Watershed.

HOW YOU CAN BE INVOLVED

Become a Stream Spotter

Join our Advisory Committee

Help organize a stream clean-up

Learn how to monitor water quality

Adopt water conservation practices

Learn about water protection strategies

Provide computer support

Host an event

Tree planting

Field work

SPREAD THE WORD ABOUT OUR WATERSHED!

Visit www.stockportwatershed.com

*For more information e-mail
fran@stockportwatershed.com*



*Tree planting at Little Seed Farm along the
confluence of the Kinderhook & Stony Hill Creeks in
Chatham, New York
Photo Credit: Gary Wall*